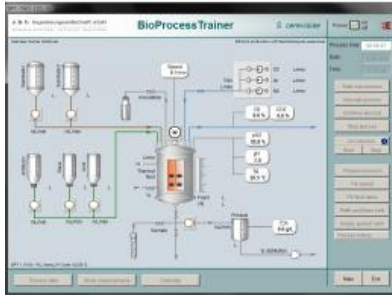


Date d'édition : 21.11.2024



Ref : EWTSCS-BPT-01

**Logiciel de simulation de commande d'un bio-réacteurs
(Licence monoposte)**

With the educational software BioProcessTrainer experiments you may run experiments with *S. Cerevisiae* in a simulated bioreactor. The process can be aerobic or anaerobic in batch, fed-batch or continuous mode of operation.

Operation of Reactor:

- Inoculate and sample
- PH- and antifoam control
- Temperature and level control
- pO2-control
- Simulation in real time and up to 15x accelerated

Catégories / Arborescence

Techniques > Régulation > Logiciels
Formations > STL > Contrôle et Régulation
Techniques > Automatismes > Logiciels

Produits alternatifs

Date d'édition : 21.11.2024

Ref : EWTSCS-BPT-10

Logiciel de simulation de commande d'un bio-réacteurs (10x licences)



With the educational software BioProcessTrainer experiments you may run experiments with *S. Cerevisiae* in a simulated bioreactor. The process can be aerobic or anaerobic in batch, fed-batch or continuous mode of operation.

Operation of Reactor:

- Inoculate and sample μ
- PH- and antifoam control
- Temperature and level control
- pO₂-control
- Simulation in real time and up to 15x accelerated